

SHEFFIELD TEACHING HOSPITALS NHS FOUNDATION TRUST

EXECUTIVE SUMMARY
REPORT TO THE TRUST HEALTHCARE GOVERNANCE COMMITTEE**HELD ON 16 MAY 2011**

Subject:	Staff Incidents January to March 2011
Supporting Director:	Professor Mike Richmond, Medical Director
Author:	Mrs Alison Redfern, Occupational Health and Safety Manager
Status¹	Note

PURPOSE OF THE REPORT:

To provide the Healthcare Governance Committee with information and analysis regarding staff incidents for the quarter January to March 2011

KEY POINTS:

The report highlights the statistics available relating to staff incidents for the quarter January to March 2011

This quarter the numbers of staff incidents recorded in the Trust Datix Incident Management System has increased. Last quarter, as mentioned, the figures were lower possibly due to the seasonal holidays and now the levels appear to be balancing out.

Although the number of incidents this quarter has increased the severity of incidents has decreased.

IMPLICATIONS²

Achieve Clinical Excellence	
Be Patient Focused	
Engaged Staff	
CQC Evidence	N/A
CQC Concerns	N/A

RECOMMENDATION(S):

The Healthcare Governance Committee is asked to note the contents of this report.

APPROVAL PROCESS

Meeting	Presented	Approved	Date

¹ Status: A = Approval
A* = Approval & Requiring Board Approval
D = Debate
N = Note

² Against the three pillars (aims) of the STH Corporate Strategy 2008-2012

Staff Incidents January to March 2011

There were a total number of **355** staff incidents and **17** student incidents reported on Datix this quarter. Last quarter there was 294 staff incidents and 12 student incidents.

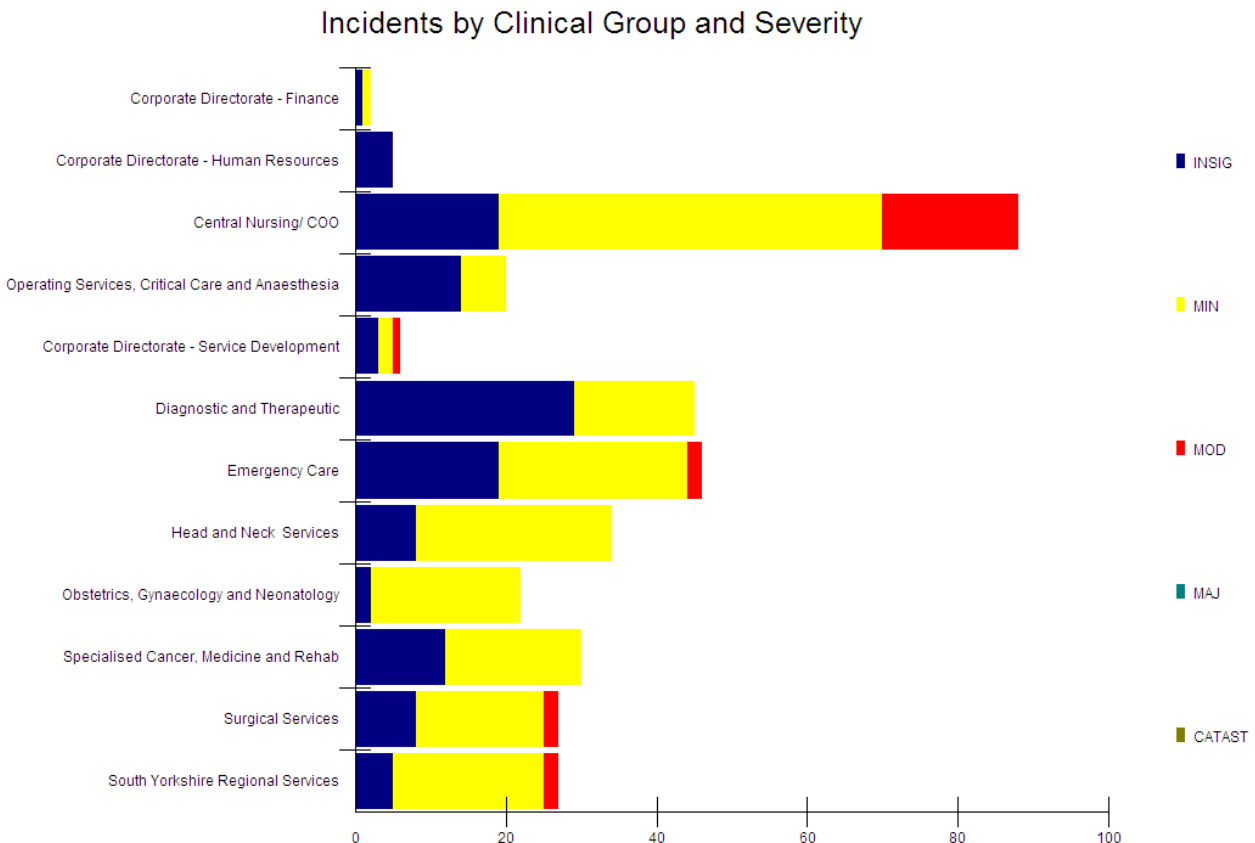
The graph below shows the severity of incidents involving staff throughout the Trust. The graph does not include the Medical Directors Directorate or the Chief Executives Office as no incidents have been recorded in these areas.

Staff incidents are graded using the Trust grading matrix and recorded locally on the Datix Incident Management System. Clinical Groups and Corporate Directorates also manage, investigate and review their own incidents locally and escalate where necessary. This quarter there were no major or catastrophic staff incidents reported which is as anticipated. Insignificant, Minor and to a much lesser extent Moderate incidents are the usual grades for staff incidents.

The first blocks in this graph reflect the number of incidents graded as insignificant in the corresponding Clinical Group or Corporate Directorate. The second blocks reflect minor incident grades and the third which is mainly in the Corporate Directorate of Central Nursing reflects moderate incident grades.

In this quarter the number of moderate incidents has slightly reduced (2%) in comparison to the last quarter. Central nursing, as usual, have the highest number of moderate graded incidents, all but 2 are in the Hotels Services Directorate and again mainly in Domestic Services on the Central Campus.

These incidents are currently under review by a new working group formed within Hotel Services with support from corporate teams.



The table below shows the Trusts top 10 Incidents by Sub Category including the last quarter.

Where a '-' is displayed in the column for the last quarter this does not mean there were no incidents for that quarter but that the sub category last quarter was not in the top 10.

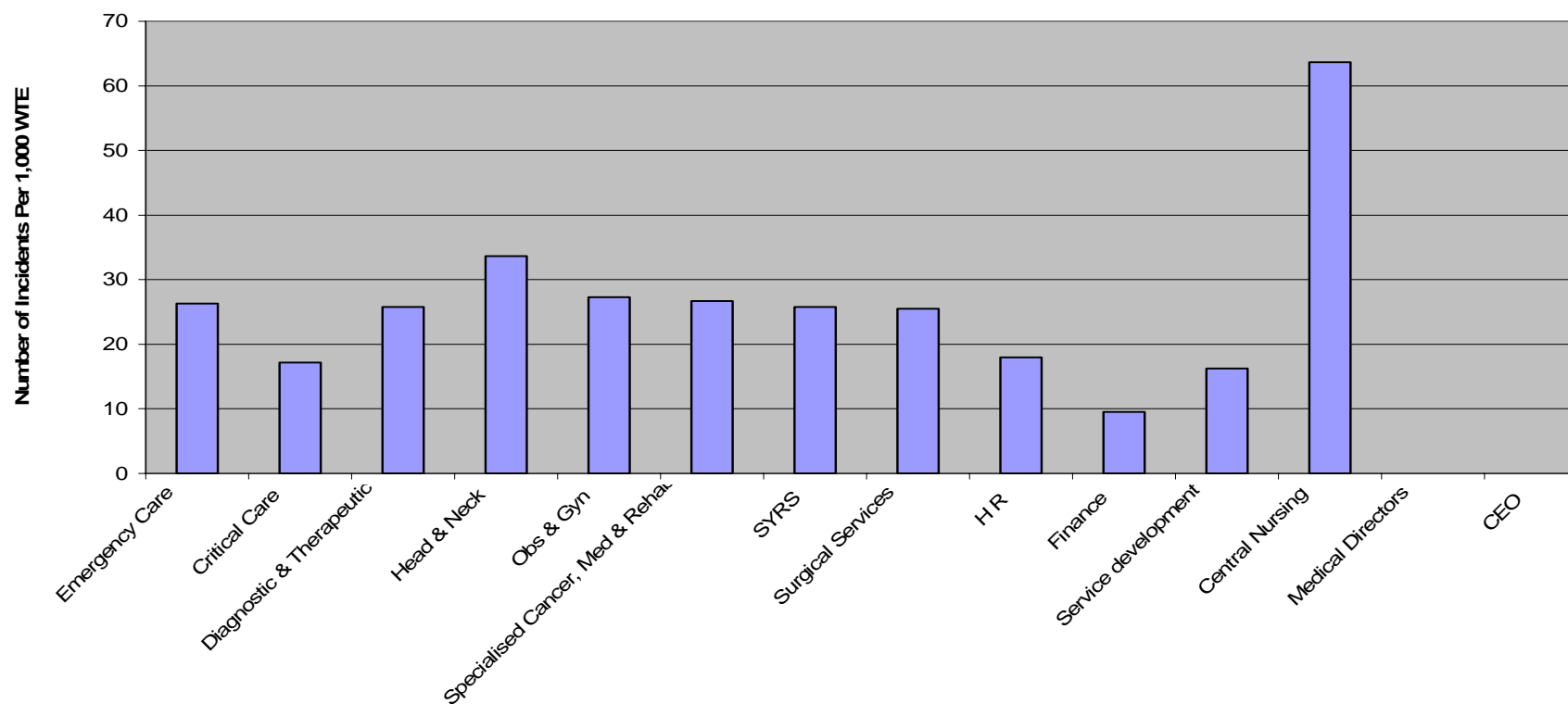
The largest change in numbers from last quarter is an increase in incidents in relation to the 'struck by/against' sub categories. These two categories have increased in number but there are no significant cluster issues as the incidents involve different individuals and they are in different areas. 'Physical assault by a patient' also shows a rise. This is due to the low figures of the last quarter; on average the figures are still lower. The other sub categories have mainly stayed the same although 'verbal abuse' has now dropped out of the top 10.

Incidents by Sub Category - Top (10)	Jan – March 2011	Oct – Dec 2010
Contact with needle or other sharps in use	38	40
Physical assault by a patient	37	26
Struck by a moving, including flying or falling object	31	18
Struck against something (e.g. furniture, fittings)	28	18
Exposure to or contact with a harmful substance	20	14
Slip, trip - indoor - wet floor	19	26
Cut with sharp material or object (NOT sharps)	13	16
Non specific cause	10	8
Splash(es) with hot/cold liquid (not chemical)	9	-
Exposure to or contact with biological agent	8	-

There is an increase in incidents this quarter, as mentioned in the last quarter, the figures were lower possibly due to the seasonal holidays and now the levels appear to be balancing out.

This quarter's staff incidents do not show any significant issues or concerns other than those currently being reviewed by the Hotel Services Working Group.

Sheffield Teaching Hospitals - Number of Incidents Per Thousand Staff



Incident Data by Quarter (January - March 11)

This graph shows the number of incidents as reported in the first graph, but with the WTE applied.

The graph reflects the increase in numbers in the Trusts staff incidents.

Critical Care, Central Nursing and Head and Neck have an increase in the numbers this quarter.

Diagnostic & Therapeutic, Service Development, HR, Emergency Care, Obs & Gyn, Specialised Cancer, Med & Rehab, Surgical Services and SYRS have remained the same as the last quarter.

The remaining two corporate directorates that are blank indicate that no incidents have been reported in these areas