

Data Quality

‘The Quiet Revolution’

June 2018

**PROUD
TO MAKE A
DIFFERENCE**

SHEFFIELD TEACHING HOSPITALS NHS FOUNDATION TRUST



Objectives

- Data Quality Governance
- Approach to Data Quality
- Administrative Profession Programme
- Data Quality measures
- Work Programme 2017/18
 - Mortality data quality
 - Source of admission
- Next Steps



Data Quality Governance

- Data Quality Steering Group
- Chaired by Assistant Chief Executive
- Clinical and non clinical membership
- Data Quality Operational Group
- Lorenzo Champions



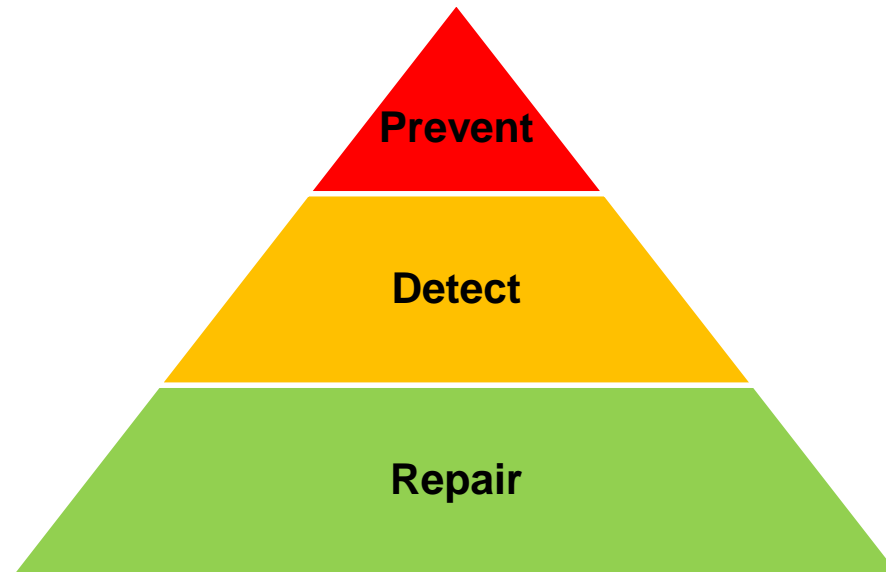
Data Quality Steering Group

- Quarterly meeting
- Our strapline –
- *“Let’s make every record and piece of data count; and put the focus required into ensuring that the building blocks on which we make so many decisions are correct.”* (Daniel Ray, Director of Data, NHS Digital, 2016)
- Agenda
 - Patient Story to set the context
 - Update on the work programme



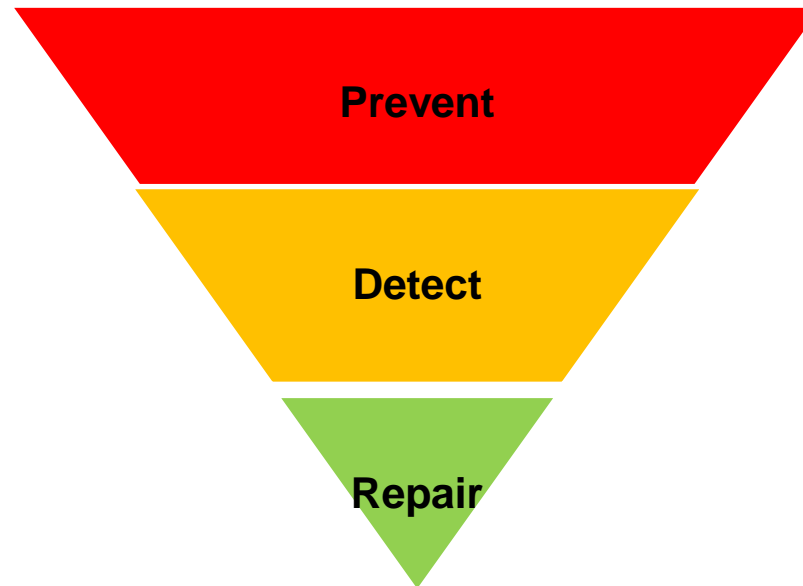
Approach to Data Quality

- Herzog et al (2007)
- Common approach to data quality



Trust approach to Data Quality

- Herzog et al (2007)
- Desired approach to data quality



PROUD TO MAKE A DIFFERENCE

SHEFFIELD TEACHING HOSPITALS NHS FOUNDATION TRUST



Administrative Profession Programme

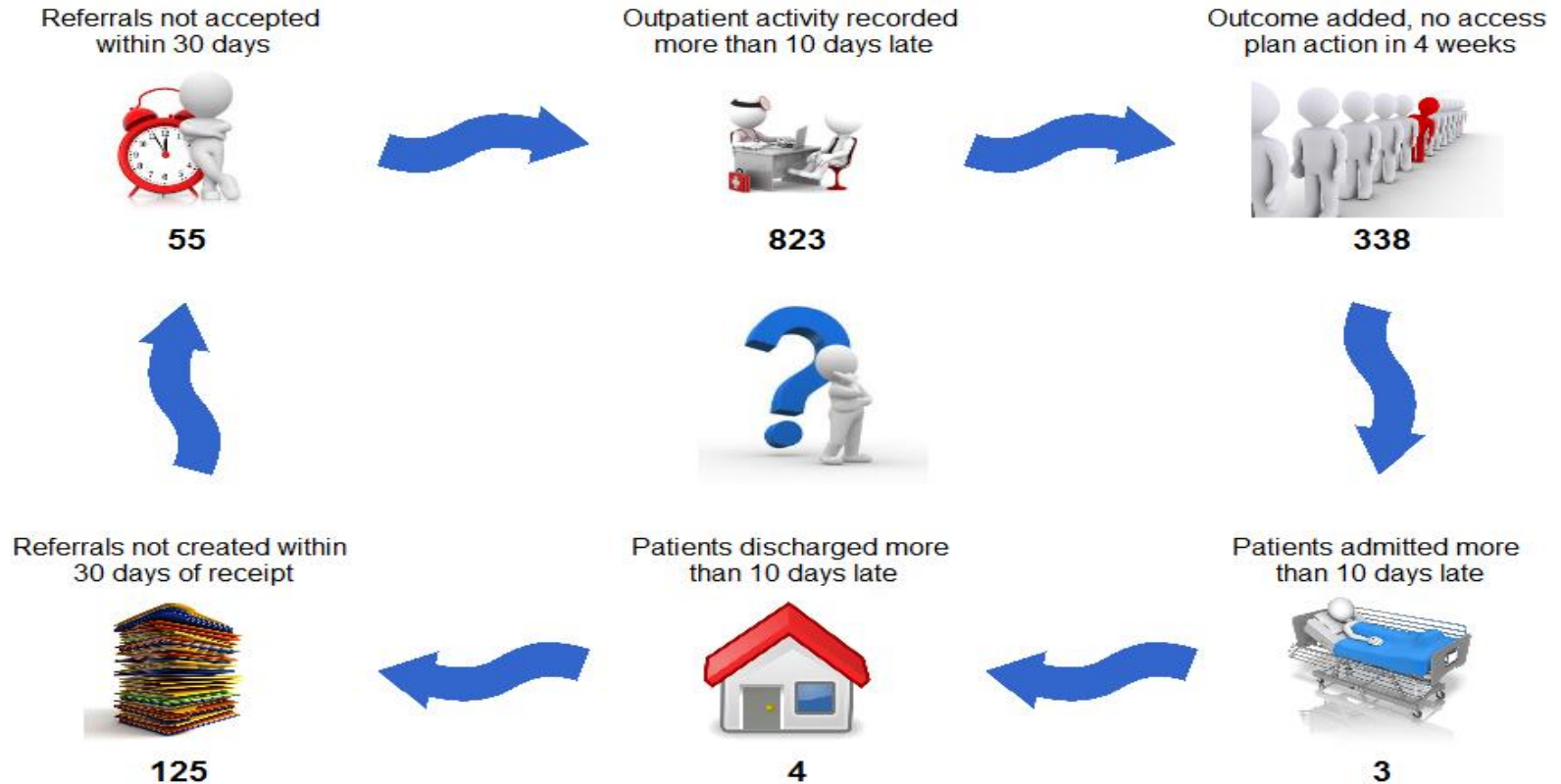
- The Administrative Profession (AP) Programme has been established to standardise administrative processes and support the professionalisation of administrative staff
- This supports the 'Prevent' philosophy and supports staff to get it right first time



Administration Patient Safety Dashboard

Head & Neck Services

May-18



PROUD TO MAKE A DIFFERENCE

SHEFFIELD TEACHING HOSPITALS NHS FOUNDATION TRUST

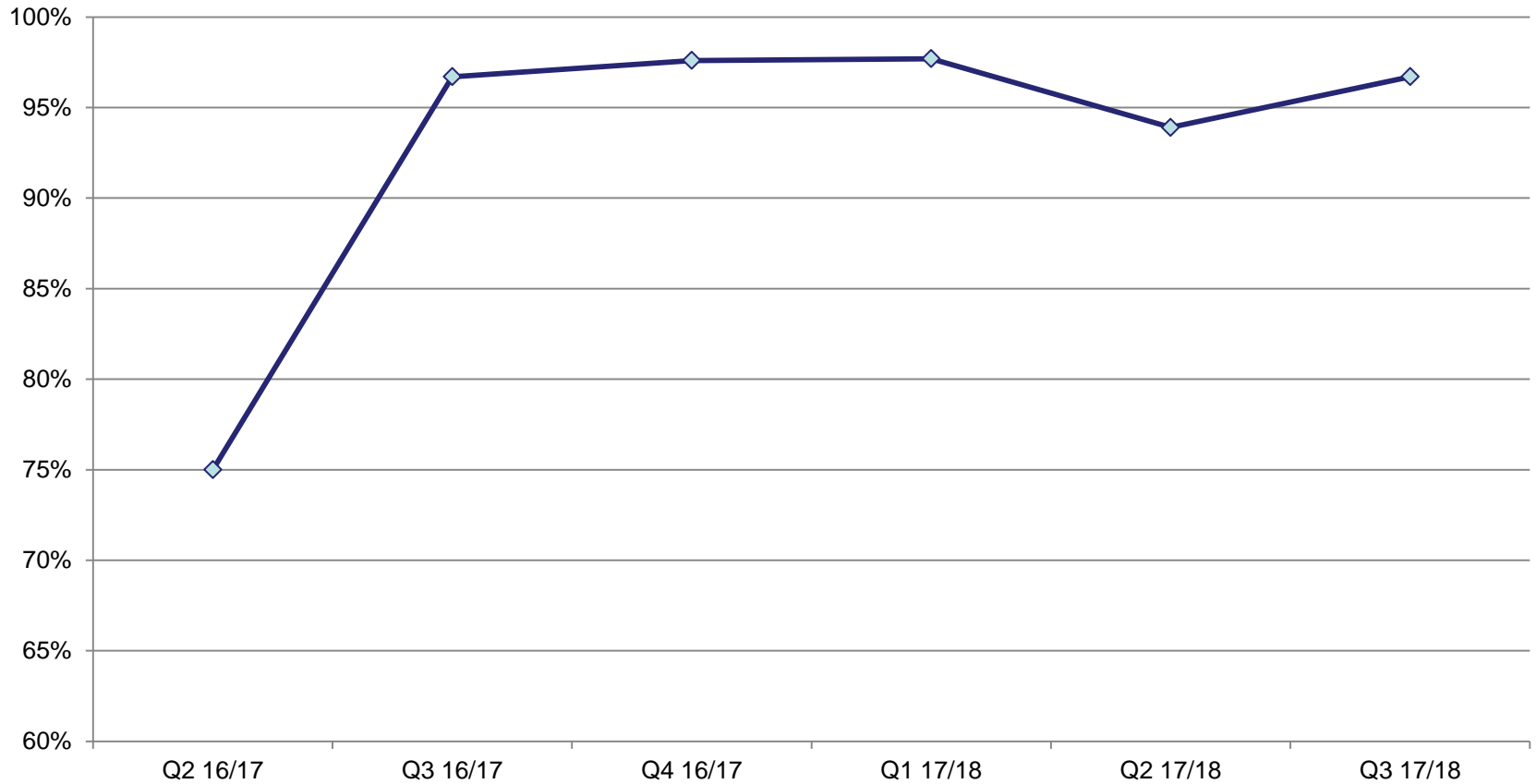


Suite of Reports

- Directorate dashboards
- Clinic utilisation
- Theatre utilisation
- A&E scorecard
- Nursing and Midwifery dashboard
- Activity Monitoring
- Seamless Surgery



Data Quality Measures – Data Quality Maturity Index

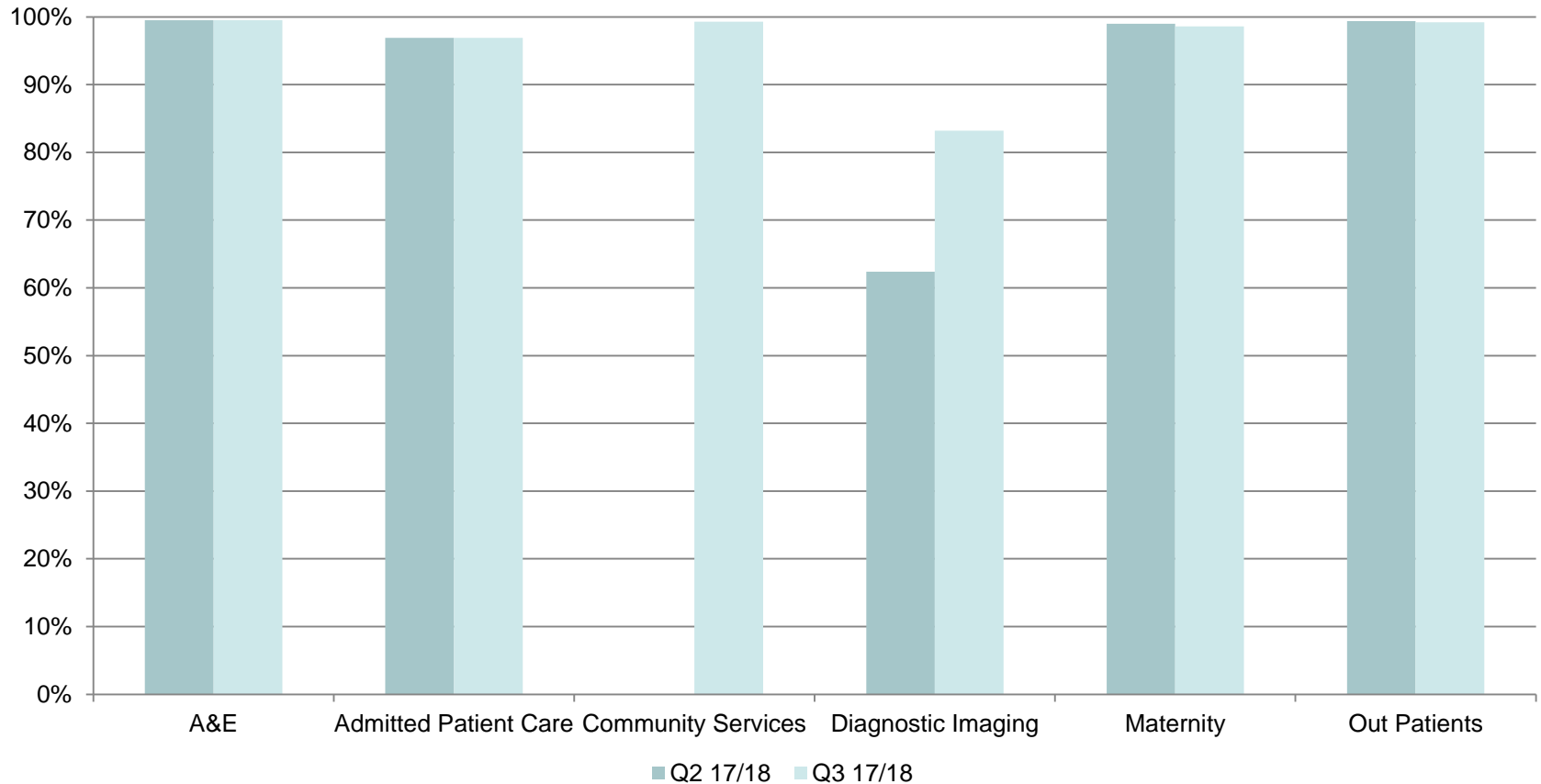


PROUD TO MAKE A DIFFERENCE

SHEFFIELD TEACHING HOSPITALS NHS FOUNDATION TRUST



Data Quality Measures – Data Quality Maturity Index – Dataset Scores

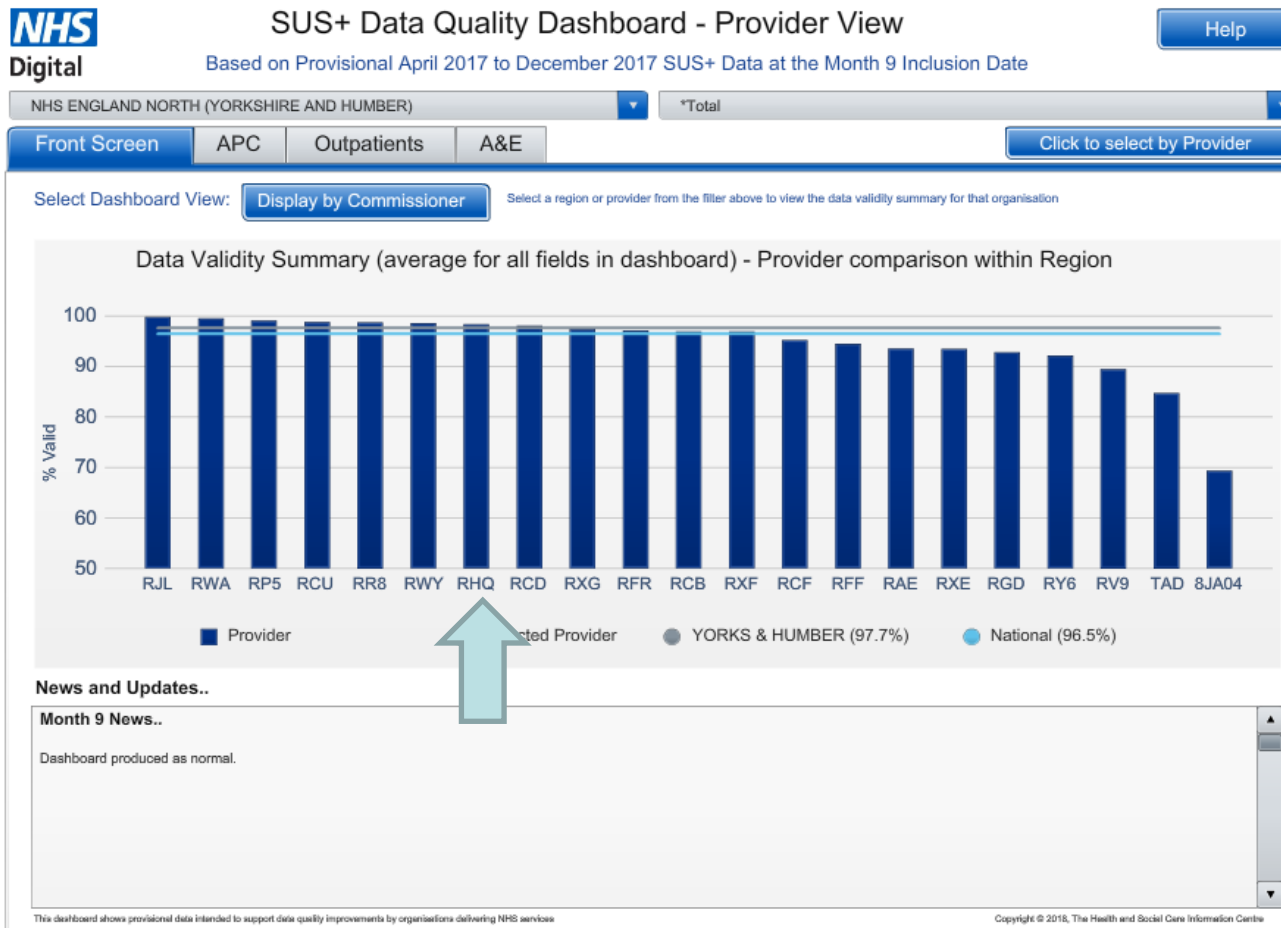


PROUD TO MAKE A DIFFERENCE

SHEFFIELD TEACHING HOSPITALS NHS FOUNDATION TRUST



SUS Data Quality Dashboard – April 2017 to December 2017



PROUD TO MAKE A DIFFERENCE

SHEFFIELD TEACHING HOSPITALS NHS FOUNDATION TRUST

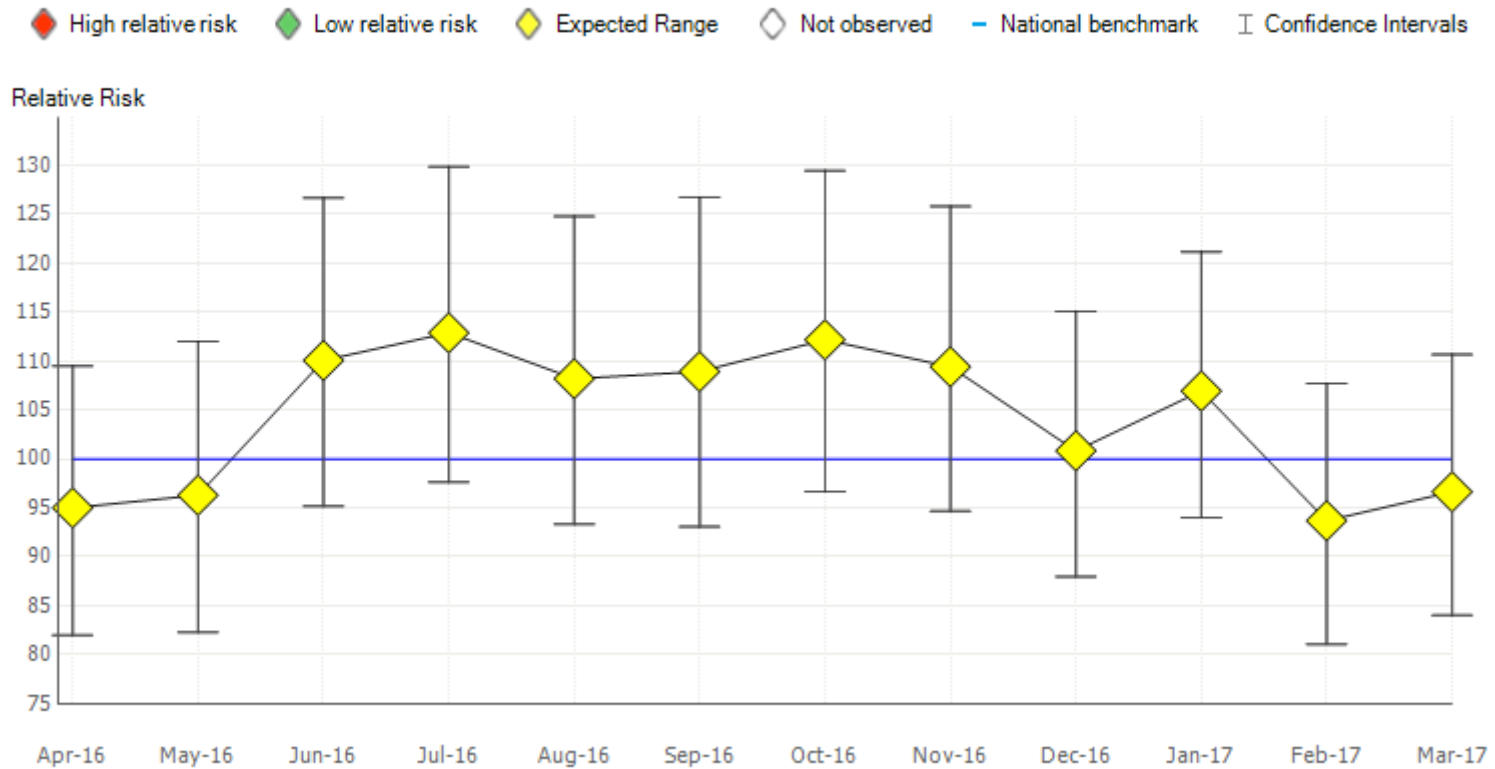


Data Quality Work Programme 2017/18 Core Activities

- Emergency Care dataset
- Community Care dataset
- A&E Department data validation
- Source of admission
- Mortality data



HSMR Data – April 2016 to March 2017



PROUD TO MAKE A DIFFERENCE

SHEFFIELD TEACHING HOSPITALS NHS FOUNDATION TRUST



2018/19 Focus

- STH Provider Representative on NHS Digital Data Quality Group
- A&E clinical pathway work
- Maternity dataset
- Further refinement of APS Dash



Summary

- Internal focus – Change the way we think about data quality
- External focus - Review national measures and make sure we are compliant
- Strategic focus – Influencing national thinking through NHS Digital and links with other Trusts



Links to Well Led Framework

- CQC – W6 - Is appropriate and accurate information being effectively processed, challenged and acted on?
- **W6.4** Are there effective arrangements to ensure that the information used to monitor, manage and report on quality and performance is accurate, valid, reliable, timely and relevant? What action is taken when issues are identified?



Thank you

Any Questions



PROUD TO MAKE A DIFFERENCE

SHEFFIELD TEACHING HOSPITALS NHS FOUNDATION TRUST

