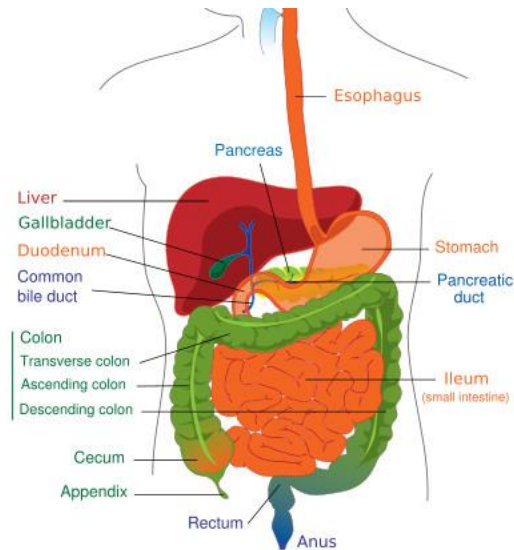


# **Bowel Management for Spinal Cord Injured Individuals**



**A One Day Study Day Held at  
The Princess Royal Spinal Injuries Centre  
Sheffield**

**on ...**

**Fri 14th Oct 2016**

**Fri 2nd Dec 2016**

**Fri 17th February 2017**

**Fri 21st April 2017**

**Fri 20th October 2017**

**Friday 15th December 2017**

Do you have patients with spinal cord injury (SCI) on your ward or in your community area?

If so you may find yourself needing to provide bowel care to them.

The aim of this Study Day is to equip attendees with the knowledge and skills which will enable them to provide safe and effective bowel care for Spinal Cord Injured Individuals. This Study Day is for qualified nurses and experienced carers.

Attendees are expected to have a reasonable understanding of Spinal Cord Injury. It is advised that anyone who has little or no experience of SCI care attends the "Care of the Spinal Cord Injured Person (for nurses and carers)" Day held at this Centre or contact the liaison nurses prior to attending this Study Day.

The day will include ...  
SCI Bowel assessment and management  
Digital stimulation and manual evacuation  
Legal implications, scope of professional practice, consent.  
Practical session using an anatomical model  
Problem Solving  
Minimising complications

The day will also include resources and guidance for cascade tuition and observational practice.

The cost of the SD is £80 for non NHS employees and £50 for NHS employees and free for Sheffield Teaching Hospitals Staff.

If you have any queries about this course, please contact the Liaison Nurses on

☎: 0114 271 5617

✉: [I.lewis@nhs.net](mailto:I.lewis@nhs.net)

If you require an application form , please contact ...

Ms Leanne Dixon,

Course Coordinator

Princess Royal Spinal Injuries Centre

Northern General Hospital

Herries Road

Sheffield

S5 7AU

☎: 0114 271 5525

✉: [leanne.dixon@sth.nhs.uk](mailto:leanne.dixon@sth.nhs.uk)

Closing date for applications – 2 weeks before SD

Please note:

This study attracts substantial interest and places are secured on a first come first serve basis. Please be aware that the course is often filled before the closing date – book early to avoid disappointment. . It is not possible to secure a place other than by payment of the registration fee.

A confirmation letter is required to attend this study day – if you have not received your letter by 1 week before the SD, please contact Leanne Dixon on the above contact details.

If applicants need to cancel, they must inform Leanne at least 7 days prior to the date of the study day. The course fee will not be refunded if applicants fail to attend or cancel at short notice.